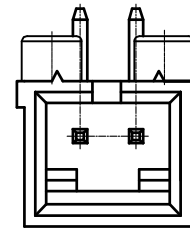
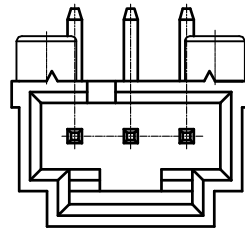
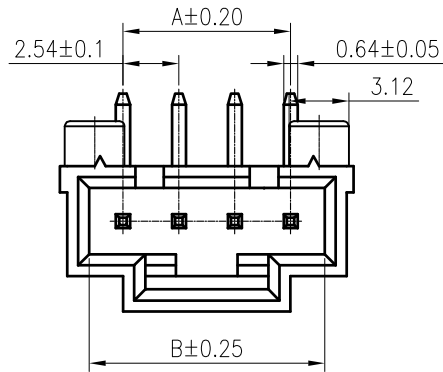
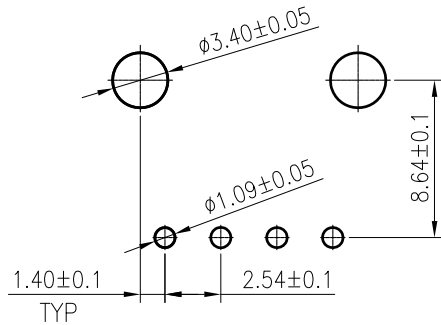
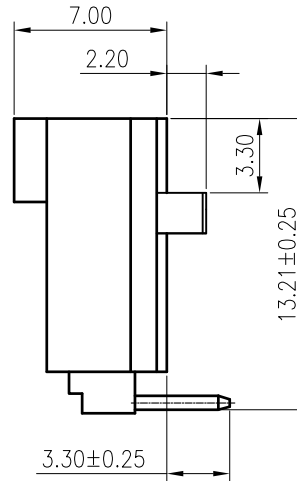
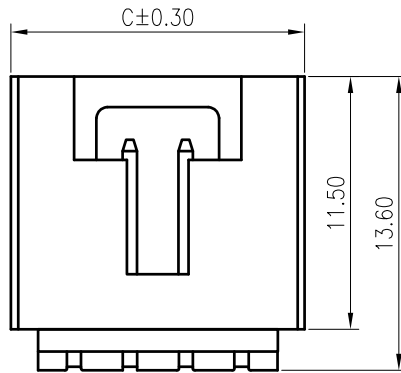


**RoHS**  
COMPLIANT



3 Circuit

2 Circuit



Recommended P.C.Board Layout

**SPECIFICATIONS**

1. Current rating: 3A AC, DC
2. Voltage rating: 250V AC,DC
3. Temperature range: -40°C ~ +105°C
4. Insulation resistance: 1000MΩ Min.
5. Withstanding voltage: 1500V AC/ minute.
6. Contact resistance: 20mΩ Max.

**Material:**

Insulator: PA9T UL 94V-0

Contact: Brass

Plating: Gold flash plated over Nickel

Mate with KR2541 series Housing

Ordering Code:

C2541RD \*\*\* 12 G01 02 TA

No.of Circuits

102:2,112:12

Circuits	Dimensions		
	A	B	C
2	2.54	5.58	8.89
3	5.08	8.13	11.43
4	7.62	10.67	13.97
5	10.16	13.21	16.51
6	12.70	15.75	19.05
7	15.24	18.29	21.59
8	17.78	20.83	24.13
9	20.32	23.37	26.67
10	22.86	25.91	29.21
11	25.40	28.45	31.75
12	27.94	30.99	34.29

**TOLERANCE**

- X.X ±0.30
- X.XX ±0.20
- X.XXX ±0.10
- Angle ±2°

**TITLE:**  
MX2.54 DIP 90°  
Ultra-thin Wafer  
Triangular Column

**DRAWN:** Liujingtian 2020.5.13

**CHECKED:**

**APPROVED:**

**UNIT:**mm **SCALE:**N/A

**SHEET:**1/1

**PROJECTION:**

**KONNRA** 东莞市康瑞电子有限公司  
DongGuan Konnra Electronics Co.,Ltd.

**PART NO.:** C2541RD\*\*\*12G0102TA

**REV.:** A2 **DRAWING NO.:** 2541WRD102-A-S



**MARK**

REVISION	DESCRIPTION	SIGNATURE	DATE
1		LJT	2020.05.13