

**RoHS**  
COMPLIANT

**SPECIFICATIONS**

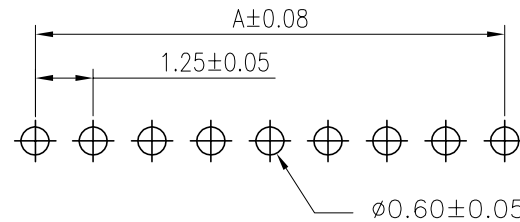
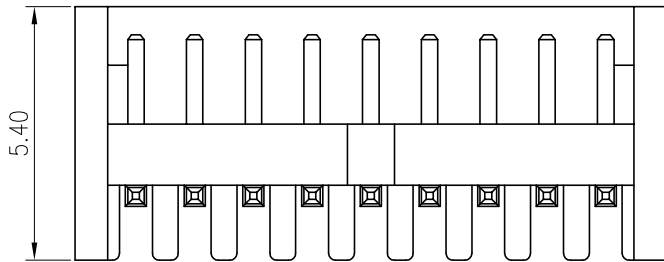
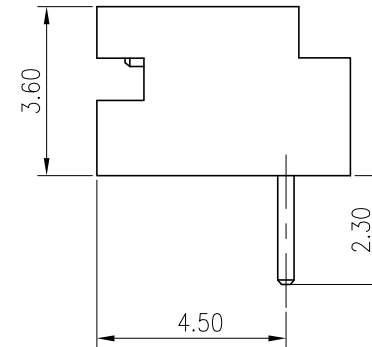
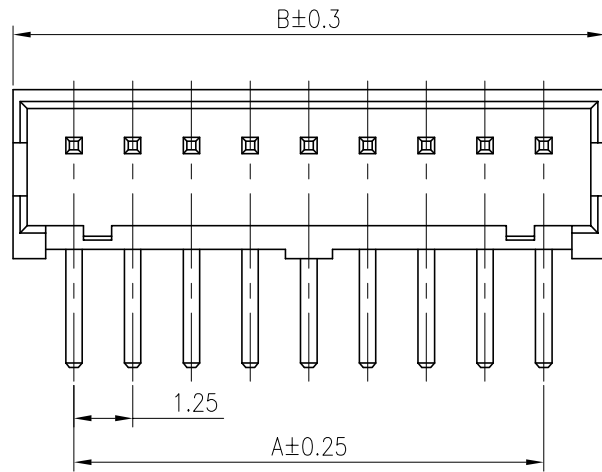
1. Current rating: 1A AC, DC
2. Voltage rating: 150V AC,DC
3. Temperature range: -40°C ~ +105°C
4. Insulation resistance: 500MΩ Min.
5. Withstanding voltage: 500V AC/ minute.
6. Contact resistance: 30m Ω Max.

**Material:**

Insulator: PA66 UL 94V-0  
Contact: Brass  
Plating: Tin plated over Nickel  
Mate with KR1256 series Housing

**C1256RD \*\*\* 19 T01 01 BA**

No. of Circuits  
102:2P  
115:15P



Recommended P.C.B. Layout  
Total tolerance:±0.05mm

Circuits	Dimensions	
	A	B
2	1.25	3.75
3	2.50	5.00
4	3.75	6.25
5	5.00	7.50
6	6.25	8.75
7	7.50	10.00
8	8.75	11.25
9	10.00	12.50
10	11.25	13.75
11	12.50	15.00
12	13.75	16.25
13	15.00	17.50
14	16.25	18.75
15	17.50	20.00

F		Uniformly arrange the drawings	Shen	2021.08.31	<b>TOLERANCE</b> X. X ±0.30 X. XX ±0.20 X. XXX ±0.10 Angle ±2°	<b>TITLE:</b> DF13 DIP 90° Wafer		DRAWN: Shen 2021.08.31		<b>KONNRA</b> 东莞市康瑞电子有限公司 DongGuan Konnra Electronics Co., Ltd.		
		Change the part number and frame format	LJT	2020.04.24				CHECKED:				
	MARK		REVISION DESCRIPTION	SIGNATURE				DATE	APPROVED:			
		1	2	3	4	UNIT: mm	SCALE: N/A	SHEET: 1/1	PROJECTION	REV. : A3	DRAWING NO. : 1256WRD101-A-S	